

WOOD GUARD RAIL REQUIRED

LEFT  
Sta 640+00 to 646+00 Length 24 ft

RIGHT  
Sta 640+00 to 646+00 Length 24 ft

NEW CULVERTS REQUIRED

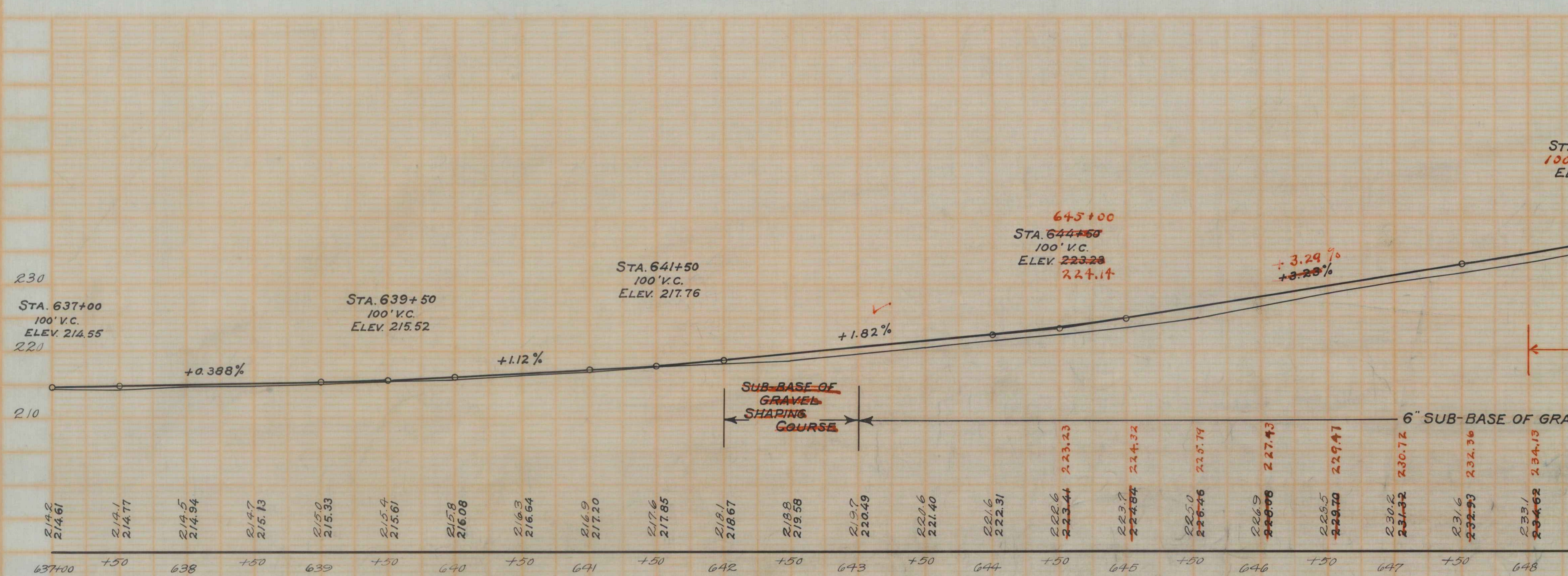
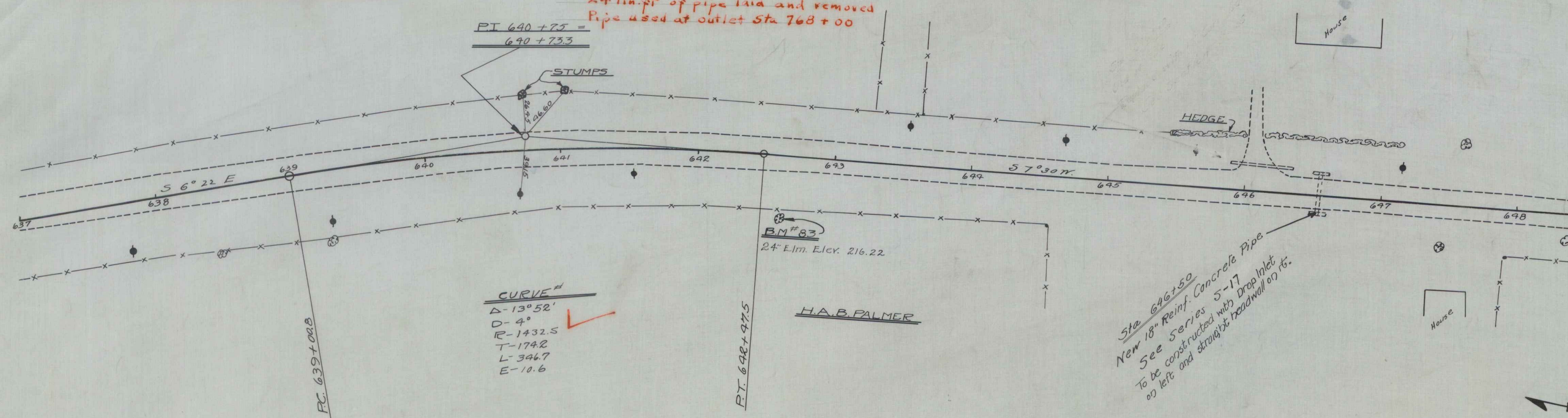
Sta. 646+50 18" Rein. Concrete Pipe Culvert 22 Lm ft  
with Drop Inlet on left and Straight N on right.  
Concrete Class A (124) = 1.0 cu yd  
Reinforcing Steel = 1.4 lbs  
24 lin. ft of pipe 12 in and removed  
Pipe used at outlet Sta 708+00

NEW DRIVEWAY CULVERTS REQUIRED

Sta 646+00 Lm 12" Rein. Concrete Pipe 46 Lm ft  
Concrete Class B (123) 11 Cu yd

DRIVEWAY CULVERT REPAIRS REQUIRED

Sta. 651+75 Build New 12" Rein. Concrete Class B (123) 11 Cu yd  
Relay 75 ft of Pipe



B.M. NO. 83 = SPIKE IN 24" ELM. 47' RIGHT OF STA. 642+62 ELEV. 216.22

STA 1002  
ELEV